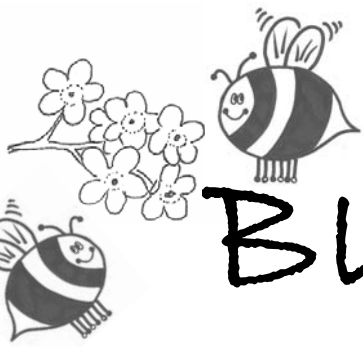


After colouring in this busy bumblebee, can you use the article on page 2 to label all the body parts correctly?



BUSY BEES

Issue 1, February 2007

Welcome! to the first edition of Busy Bees, the Bumblebee Conservation Trust's newsletter written just for kids! It's packed with fun activities and interesting facts about bumblebees.

If you have any questions or suggestions, then please email or post them to us at the address at the bottom of this page. We are especially interested in receiving your poems, drawings or songs. We will display all of these on our website and will even include some of our favourites in future editions of Busy Bees!

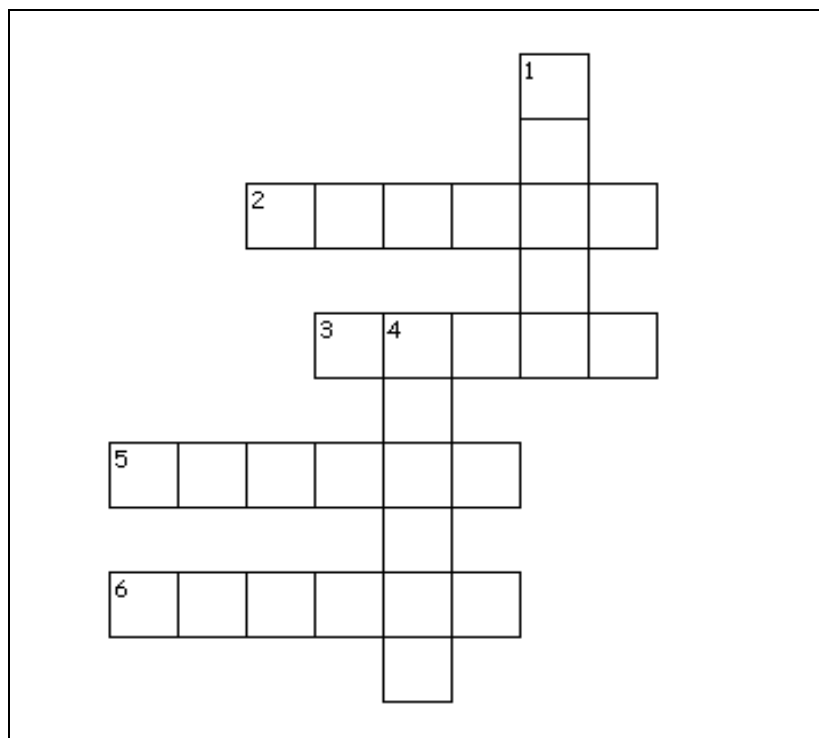
We here at BBCT are so excited that you are helping us to protect our beautiful and fascinating bumblebees!

Thank you!

Bumblebee Crossword



Use the article on the next page, to fill in this crossword with the correct answers.



Across

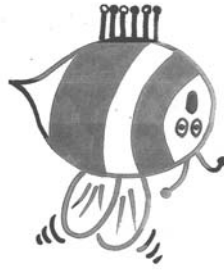
- The female bumblebees carry this in a basket on their back legs.
- Used by the female bumblebee to defend herself
- A colour often seen in bumblebee stripes
- The sugary solution collected from flowers

Down

- The female boss bumblebee is called this
- The middle part of a bumblebee's body



About Bumblebees



Like all insects, bumblebees have three main body parts, a head, a thorax in the middle and an abdomen. They have six legs for walking and for collecting pollen from flowers; four wings for flying; and two antennae, which they use to smell flowers. They are covered in fur, which helps to keep them warm. To defend themselves, the female bumblebee has a sting in her tail although she hardly ever uses it.

Most bumblebees nest on or just under the ground. The queen bumblebee starts the nest and she is the boss of the colony. She collects pollen and nectar (a sugary solution) from flowers in the spring to feed her first young. The female young grow up into 'worker' bees, which collect food from flowers to feed everyone in the colony. The pollen is carried in a basket on the back legs of the bumblebees. Only the females collect pollen. The males just laze about feeding themselves. However, they do help to make new, baby bumblebees so they are just as important as the queen and the workers.

There are 24 different types of bumblebee in Britain but it is quite difficult to find some of them now as they are becoming rare. That is because they don't have enough flowers to feed on anymore. In the past, Britain had big wildflower meadows but many of these have been destroyed to build things on or to grow crops. Bumblebees like fields with lots of different sorts of wildflowers in them. You can help them by planting flowers in your garden that bumblebees really love. Write to us for a list of flowers to plant or visit our webpage at www.bumblebeeconservationtrust.co.uk.



Bumblebee Wordsearch

Can you find these words in the grid below? The words can be found horizontally, vertically or diagonally

ground
sting

hair
six

four
eggs

queen
flowers

w	d	f	h	j	t	o	s	n	p
r	p	k	a	f	l	b	f	p	s
g	n	s	i	x	l	r	m	f	t
l	r	t	r	q	u	e	e	n	i
f	l	o	w	e	r	s	g	y	n
o	l	z	u	j	l	x	g	m	g
u	s	l	r	n	v	m	s	u	e
r	w	b	m	k	d	c	f	t	r

Bumblebee Quiz

Use the words you found in the word search to answer these questions.

- 1 What helps bumblebees protect themselves from predators?
- 2 What do bumblebees have to keep them warm?
- 3 How many wings do bumblebees have?
- 4 Where do bumblebees find their food?
- 5 Which bumblebee starts the nest?
- 6 How many legs do bumblebees have?



Did you know?!

Bumblebees have smelly feet! They leave their scent on flowers after they have fed. This leaves an invisible message to other bumblebees, telling them that all the nectar from that flower has been drunk!