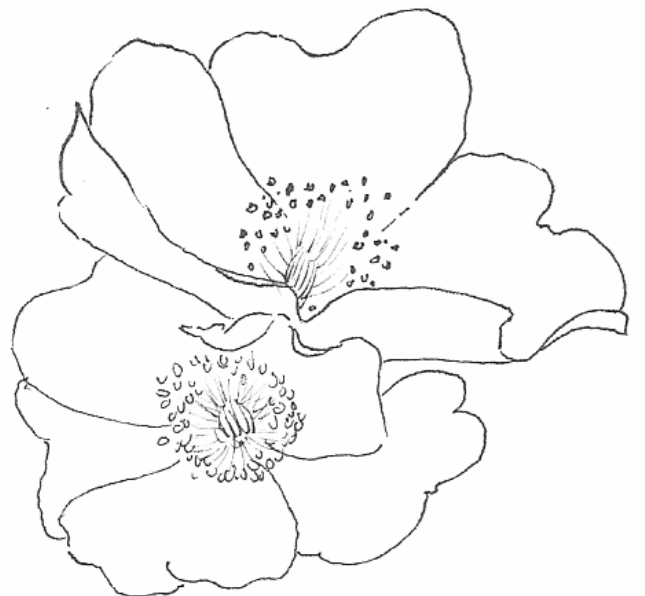
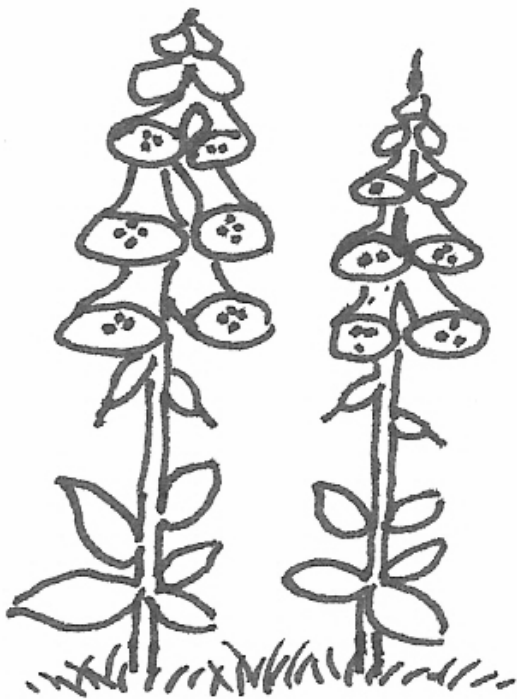
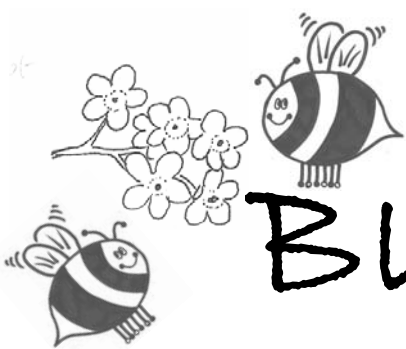


This long-tongued bumblebee and this short-tongued bumblebee have found their favourite flowers! Can you colour them in as brightly as you can?





# BUSY BEES

Issue 2, June 2007

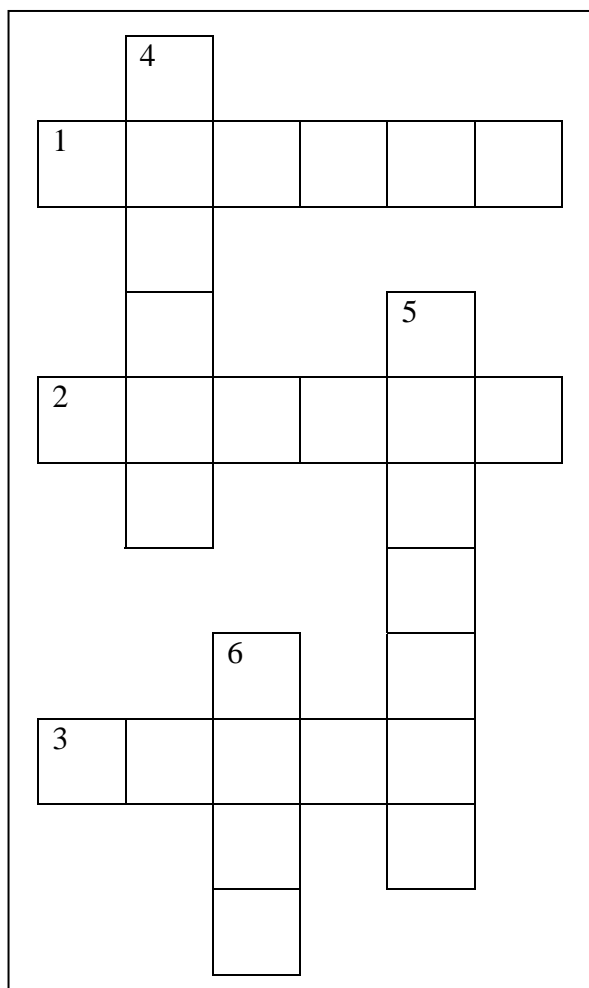
Welcome!

to the second edition of Busy Bees, the Bumblebee Conservation Trust's newsletter written just for kids! We hope that you enjoyed Issue 1 and that you learned lots of fun and interesting facts about bumblebees.

If you have any questions or suggestions, then please email or post them to us at the address at the bottom of this page. We'd love to receive any of your poems, drawings or songs. We will display all of these on our website and will even include some of our favourites in future editions of Busy Bees!

## Bumblebee Crossword

Can you find the answers to this crossword in the article on the next page?



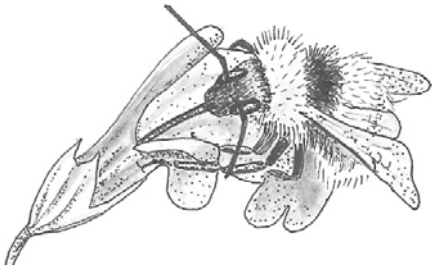
### ACROSS

- Bumblebees use this to suck nectar from flowers
- What is the sugary liquid called that bumblebees collect from flowers?
- \_\_\_\_\_ tongued bumblebees like open flowers

### DOWN

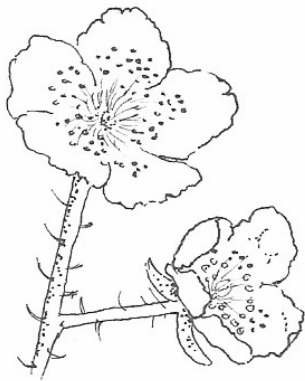
- The yellow dust inside a flower that it uses to make new flowers
- Female bumblebees store pollen in their 'pollen \_\_\_\_\_' to carry it back to the nest
- \_\_\_\_\_ tongued bumblebees like deep flowers

# Food for Bumblebees



Like all creatures, bumblebees need a good supply of food to give them the energy they need to live. Bumblebees get their food from flowers. Different types of bumblebees like to feed on different types of flowers.

They search for their favourite ones by smelling the flowers using their antennae. Then they suck a sugary liquid like juice (called nectar) from the centre of the flower using their tongue. Some bumblebees have very long tongues. This means that they can get nectar out of very deep flowers, like foxgloves. Other bumblebees have very short tongues, which means that they can only get nectar from open flowers, for example daisies.



This is an open flower. It has a very flat shape and bees can easily reach the centre of the flower where the nectar is. Do you think a long-tongued or a short-tongued bumblebee will feed on this flower?



This is a deep flower. It is long and is shaped like a tube. The nectar is hidden in the bottom of the tube where bees cannot easily reach it. Will long-tongued or short-tongued bumblebees feed on this flower?

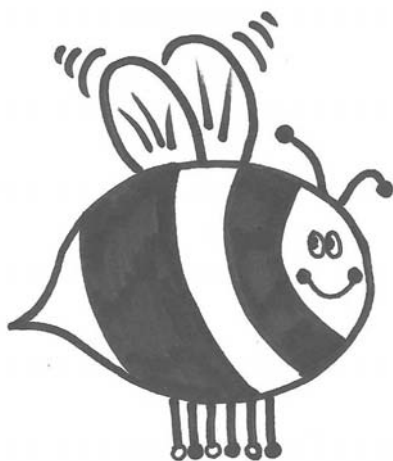
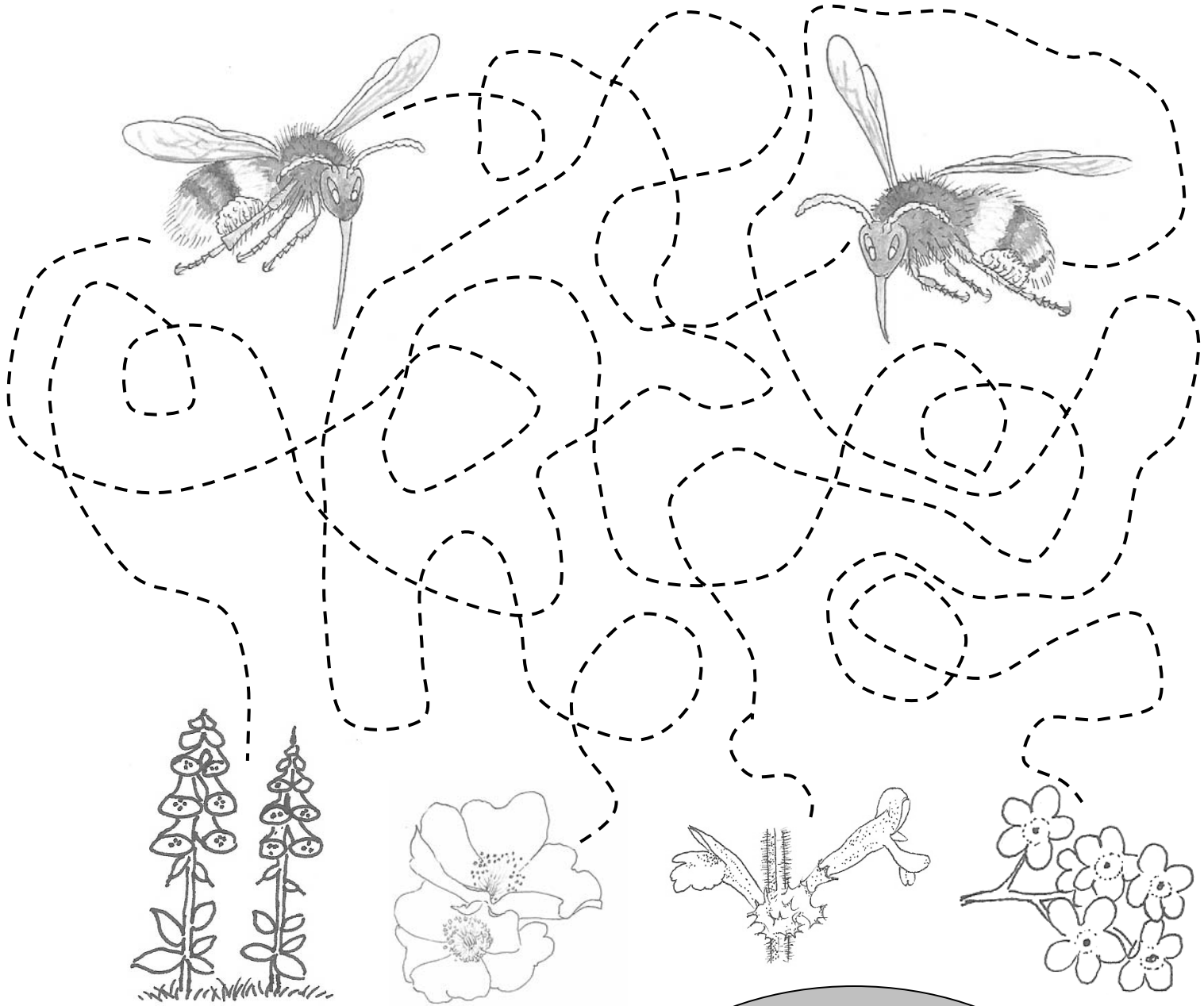
Flowers also produce pollen. This is the yellow dust inside a flower that it uses to make new flowers. Bumblebees eat this pollen and also collect it to feed the baby bumblebees. Only the girls do this. They put the pollen in pollen baskets on their hind legs and carry it back to the nest.

Bumblebees must make their nests where there are lots of flowers to make sure that they will have enough to eat. Sadly, some types of bumblebees are becoming quite rare because there are not enough flowers for them to feed on in the wild. Therefore, you can help provide food for bumblebees by planting lots of the flowers that they love in your garden or at your school. Please write to us or look at our website for a list of bumblebee favourites.

# Bumblebee Flower Hunt



Look at the two bumblebees below. Which one has a long tongue and which one has a short tongue? Can you help them to find their favourite flowers? Remember - long-tongued bumblebees prefer deep flowers and short-tongued bumblebees prefer open flowers!



## Did you know?!

Bumblebees can fly up to 4 kilometres (2.5 miles) from the nest in one trip to find food. This is like you walking 800 kilometres (450 miles - from London to Scotland!) just to get your lunch!