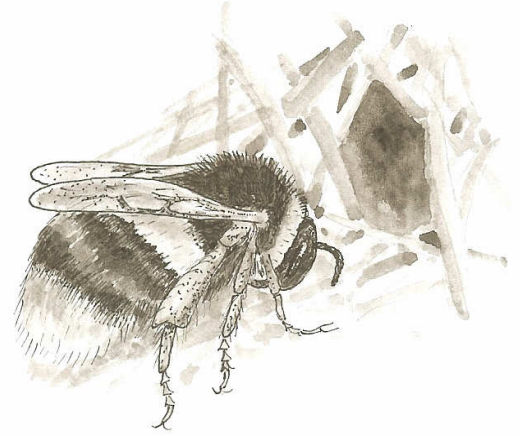




Your bumblebee nesting box

Thank you for purchasing a bumblebee nesting box. It's great that you care about the bumblebees in your garden.

This fact sheet, produced by the Bumblebee Conservation Trust, will help you get the best out of your box.



Attracting bumblebees to your garden

Bumblebees need two things in life – a ready supply of nectar and pollen and somewhere suitable to build a nest. To persuade them to nest in your box you first need to tempt queens into your garden in spring. Make sure that you include as many **bumblebee-friendly flowers** as possible, and try to provide something suitable throughout the year (March until September). A list of recommended plants is available on the BBCT website, or as a fact sheet on request.

Bumblebees in Crisis!

- Did you know that the UK currently has **24 species** of bumblebee?
- Sadly, 2 species have become nationally **extinct** within the last 70 years and several more are in **seriously decline**
- Only 6 types remain relatively common and widespread (these are the ones you are most likely to see in your garden).
- Bumblebees are very **important pollinators** of crops and wildflowers, so it's extremely important that we halt their declines!
- They are also lovely little creatures which we should cherish and protect.
- Visit our website or write to us if you'd like to learn more about the work of the Bumblebee Conservation Trust, support us, or become a member.





Getting the best out of your box

Bumblebees do nest in artificial boxes, but we're not yet sure how often. To increase your chances of attracting a queen we recommend you follow these guidelines:

- Site the box in a shady spot at the back of a border, in a bank or under a hedge or shrub
- The type of nesting material is very important – a large handful of hamster bedding from a pet shop may work, perhaps mixed 4:1 with dry moss. Avoid cotton-wool.
- Don't clean the box out each year. If a mouse nests in the box it will probably *increase* the chances of bumblebees taking over the following spring
- Some types of box now come with an entrance tunnel, but if yours didn't you could consider adding one. A queen bumblebee is looking for a conspicuous dark hole more that $\frac{3}{4}$ inch in diameter. A 20cm tunnel into a bank may be particularly attractive to some species.
- Finally, be patient – it may time for the box to weather into its surroundings and be accepted by the bees.

✂-----✂-----✂-----✂-----✂-----✂-----✂-----✂

Register your box with BBCT

Help us to learn more about these important insects, and receive the most up-to-date advice on encouraging bumblebees to nest.

Name _____ Description of box _____

Address _____

Postcode _____ Email _____

We will use this information purely for the purposes of researching the use of bumblebee nesting boxes and providing up-to-date advice and information. We will **NOT** pass on your details to anyone else. We would like to occasionally contact you via post or email to find out whether your box has been used, or to pass on the latest guidance. If you would prefer **NOT** to be contacted in this way then please tick this box

Post this form to the address above, or fill it in **online** on our website

